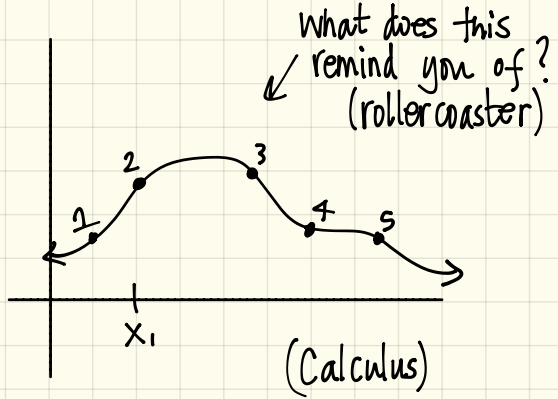
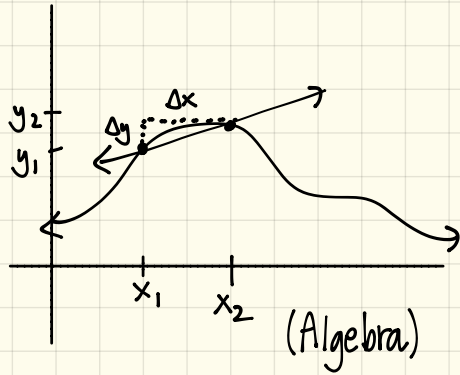


Introduction to Calculus

Let's consider the same 2 graphs:



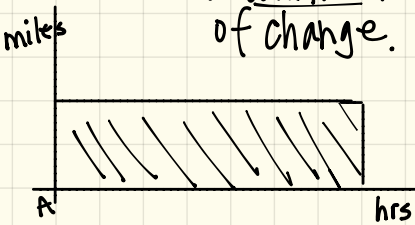
• discuss rate of change

$$m = \frac{\Delta y}{\Delta x} = \frac{y_2 - y_1}{x_2 - x_1}$$

What about rates of change at only 1 point?

Let's consider 2 graphs:

1st graph Driving a car at a constant rate of change.



Find the area under the
Area = length \times width

(Algebra)

2nd graph Driving a car at varying rates of change.



What about finding the under this curve?

(Calculus)

